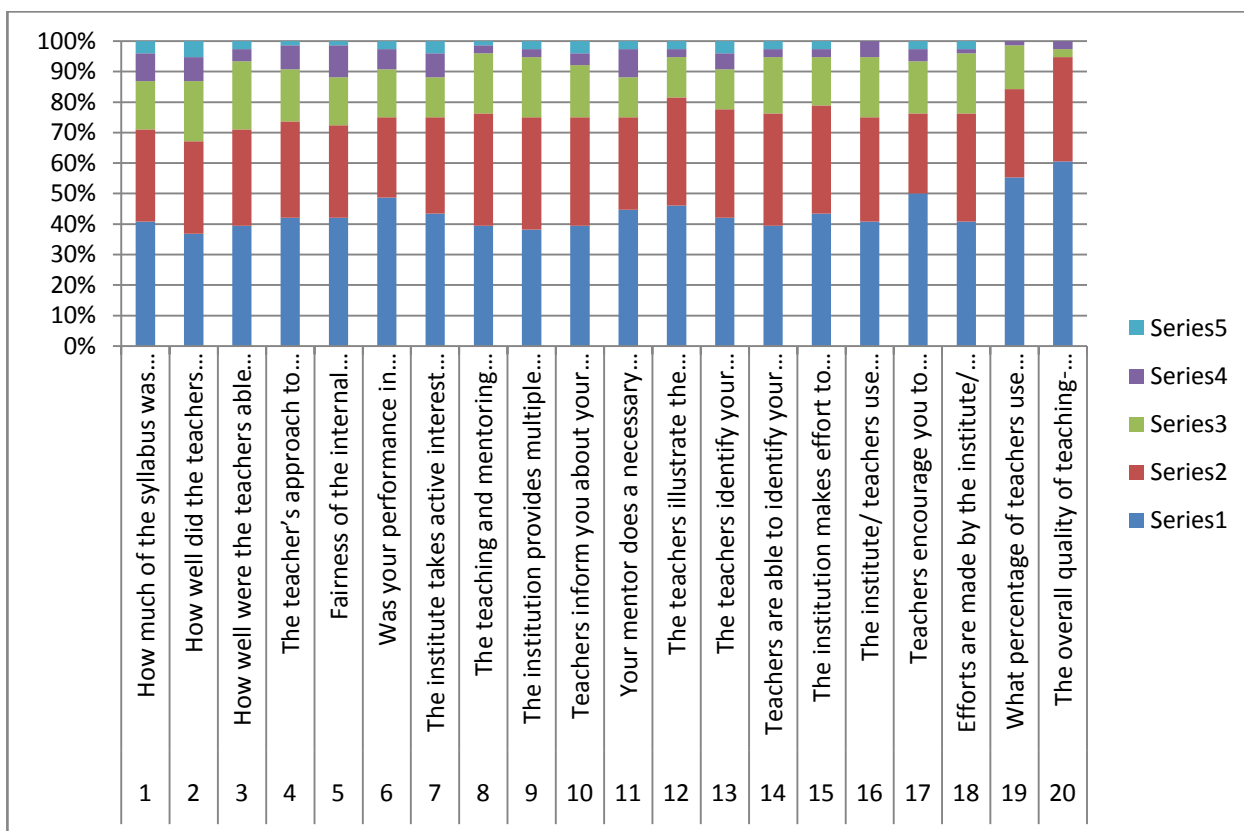


KANARA WELFARE TRUST'S
DIVEKAR COLLEGE OF COMMERCE & P.G. (M.Com) CENTRE KARWAR
Exit Feed Back Analysis B.Com for the year 2019 -20

S.No	Questions	4	3	2	1	0	Total
1	How much of the syllabus was covered in the class?	31	23	12	7	3	76
2	How well did the teachers prepare for the classes?	28	23	15	6	4	76
3	How well were the teachers able to communicate?	30	24	17	3	2	76
4	The teacher's approach to teaching can best be described as	32	24	13	6	1	76
5	Fairness of the internal evaluation process by the teachers.	32	23	12	8	1	76
6	Was your performance in assignments discussed with you?	37	20	12	5	2	76
7	The institute takes active interest in promoting internship, student exchange, field visit opportunities for students.	33	24	10	6	3	76
8	The teaching and mentoring process in your institution facilitates you in cognitive, social and emotional growth.	30	28	15	2	1	76
9	The institution provides multiple opportunities to learn and grow.	29	28	15	2	2	76
10	Teachers inform you about your expected competencies, course outcomes and programme outcomes.	30	27	13	3	3	76
11	Your mentor does a necessary follow-up with an assigned task to you.	34	23	10	7	2	76
12	The teachers illustrate the concepts through examples and applications.	35	27	10	2	2	76
13	The teachers identify your strengths and encourage you with providing right level of challenges.	32	27	10	4	3	76
14	Teachers are able to identify your weaknesses and help you to overcome them.	30	28	14	2	2	76
15	The institution makes effort to engage students in the monitoring, review and continuous quality improvement of the teaching learning process.	33	27	12	2	2	76
16	The institute/ teachers use student centric methods, such as experiential learning, participative learning and problem solving methodologies for enhancing learning experiences.	31	26	15	4	0	76
17	Teachers encourage you to participate in extracurricular activities.	38	20	13	3	2	76
18	Efforts are made by the institute/ teachers to inculcate soft skills, life skills and employability skills to make you ready for the world of work.	31	27	15	1	2	76
19	What percentage of teachers use ICT tools such as LCD projector, Multimedia, etc. while teaching.	42	22	11	1	0	76
20	The overall quality of teaching-learning process in your institute is very good.	46	26	2	2	0	76
21	Give three observation / suggestions to improve the overall teaching – learning experience in your institution.						

- a.
- b.
- c.

B.Com.-Final Year Feedback Analysis 2019-20



KANARA WELFARE TRUST'S
DIVEKAR COLLEGE OF COMMERCE & P.G. (M.Com) CENTRE KARWAR
Exit Feed Back Analysis M.Com for the year 2019 -20

S.No	Questions	4	3	2	1	0	Total
1	How much of the syllabus was covered in the class?	14	6	4	3	1	28
2	How well did the teachers prepare for the classes?	12	9	3	3	1	28
3	How well were the teachers able to communicate?	16	8	2	2	0	28
4	The teacher's approach to teaching can best be described as	13	10	2	2	1	28
5	Fairness of the internal evaluation process by the teachers.	14	7	3	3	1	28
6	Was your performance in assignments discussed with you?	19	4	2	2	1	28
7	The institute takes active interest in promoting internship, student exchange, field visit opportunities for students.	18	5	3	2	0	28
8	The teaching and mentoring process in your institution facilitates you in cognitive, social and emotional growth.	17	7	2	2	0	28
9	The institution provides multiple opportunities to learn and grow.	15	10	1	1	1	28
10	Teachers inform you about your expected competencies, course outcomes and programme outcomes.	17	7	2	1	1	28
11	Your mentor does a necessary follow-up with an assigned task to you.	12	8	7	1	0	28
12	The teachers illustrate the concepts through examples and applications.	16	9	2	1	0	28
13	The teachers identify your strengths and encourage you with providing right level of challenges.	13	11	2	1	1	28
14	Teachers are able to identify your weaknesses and help you to overcome them.	14	9	4	1	0	28
15	The institution makes effort to engage students in the monitoring, review and continuous quality improvement of the teaching learning process.	14	8	3	2	1	28
16	The institute/ teachers use student centric methods, such as experiential learning, participative learning and problem solving methodologies for enhancing learning experiences.	13	7	4	3	1	28
17	Teachers encourage you to participate in extracurricular activities.	14	8	3	2	1	28
18	Efforts are made by the institute/ teachers to inculcate soft skills, life skills and employability skills to make you ready for the world of work.	15	9	2	1	1	28
19	What percentage of teachers use ICT tools such as LCD projector, Multimedia, etc. while teaching.	14	9	2	2	1	28
20	The overall quality of teaching-learning process in your institute is very good.	15	8	2	2	1	28
21	Give three observation / suggestions to improve the overall teaching – learning experience in your institution.						

- a.
- b.
- c.

M.Com.-Final Year Feedback Analysis 2019-20

